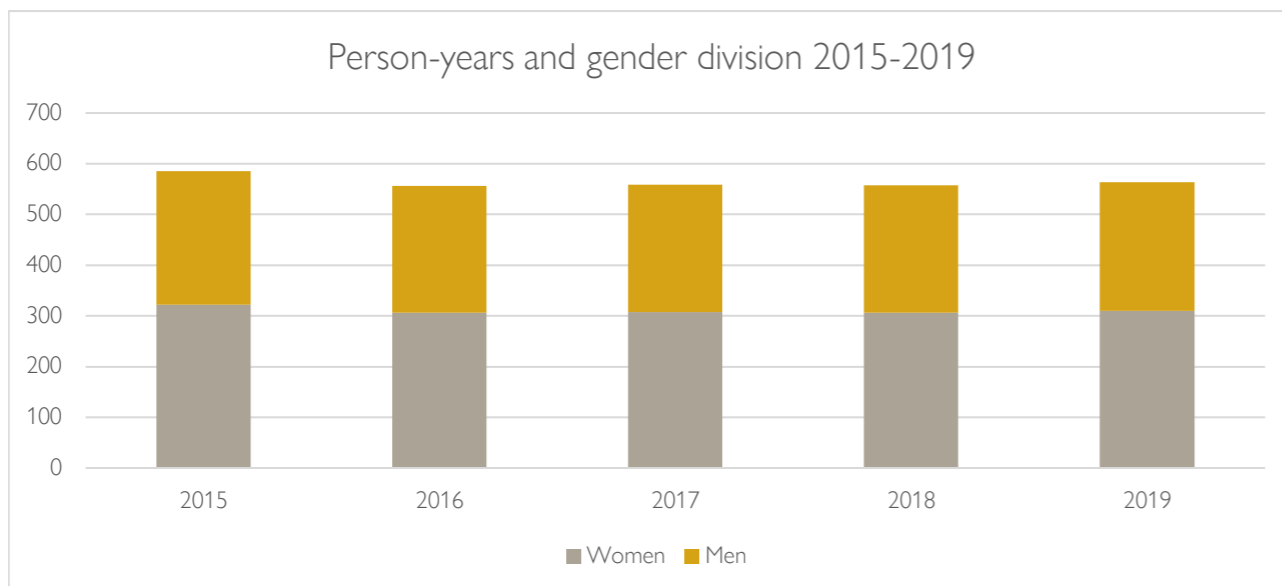


Person years and gender-division

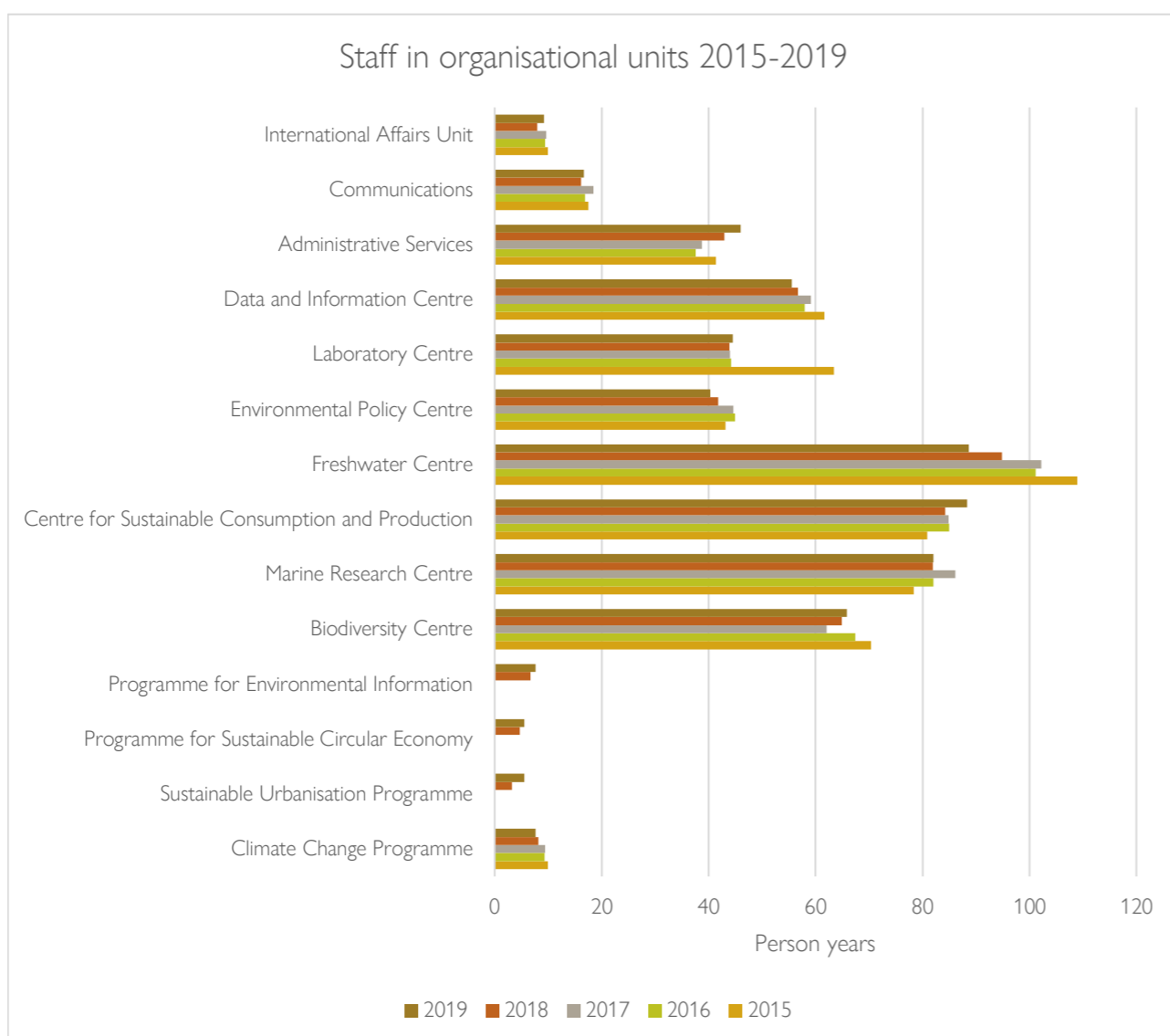
	2015	2016	2017	2018	2019
Person years	586	556	559	558	564
Women	322,3	305,8	307	306	310
Men	263,7	250,2	252	252	254



Staff in organisational units

Person-years

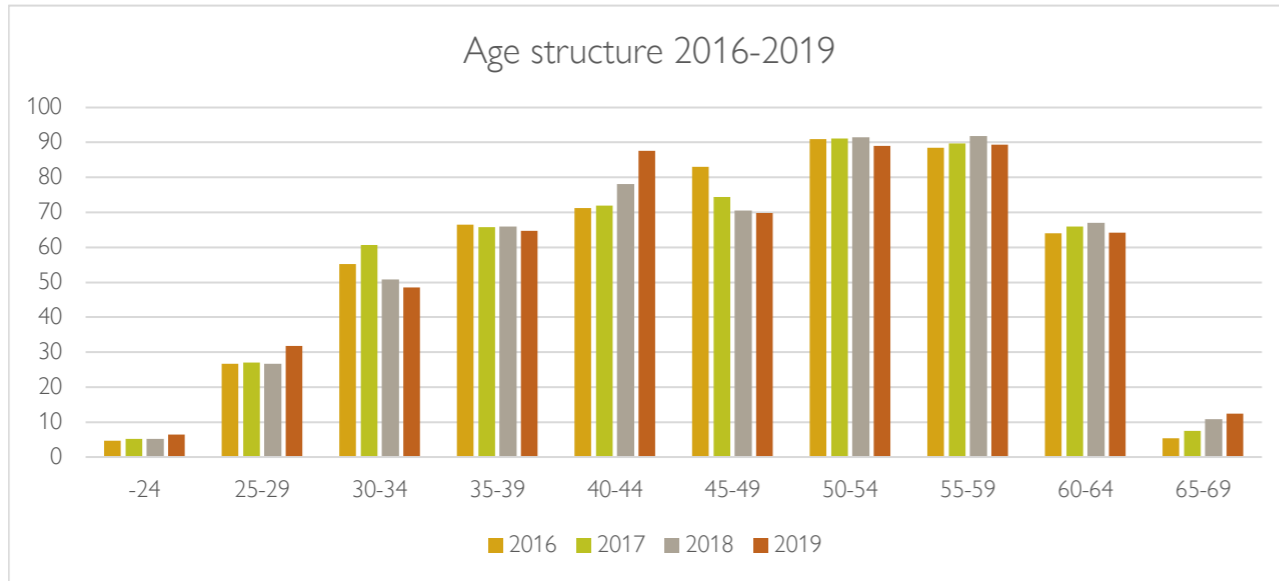
	2015	2016	2017	2018	2019
Climate Change Programme	10	9	9	8	8
Sustainable Urbanisation Programme				3	6
Programme for Sustainable Circular Economy				5	6
Programme for Environmental Information				7	8
Biodiversity Centre	70	67	62	65	66
Marine Research Centre	78	82	86	82	82
Centre for Sustainable Consumption and Production	81	85	85	84	88
Freshwater Centre	109	101	102	95	89
Environmental Policy Centre	43	45	45	42	40
Laboratory Centre	63	44	44	44	45
Data and Information Centre	62	58	59	57	56
Administrative Services	41	38	39	43	46
Communications	18	17	18	16	17
International Affairs Unit	10	9	10	8	9
<b>TOTAL</b>	<b>586</b>	<b>556</b>	<b>559</b>	<b>558</b>	<b>564</b>



### Age structure

Person years

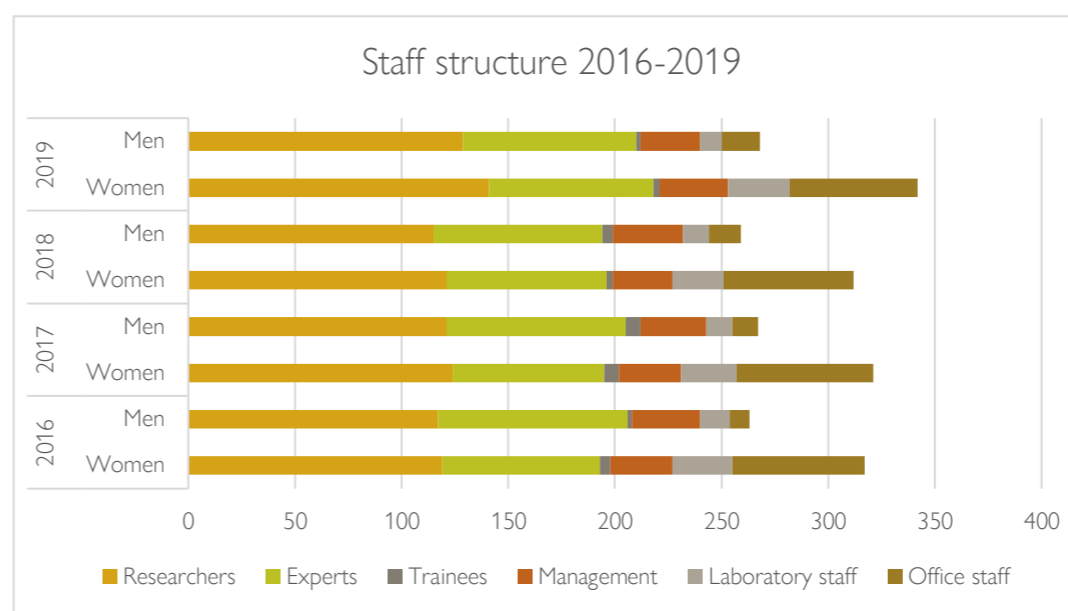
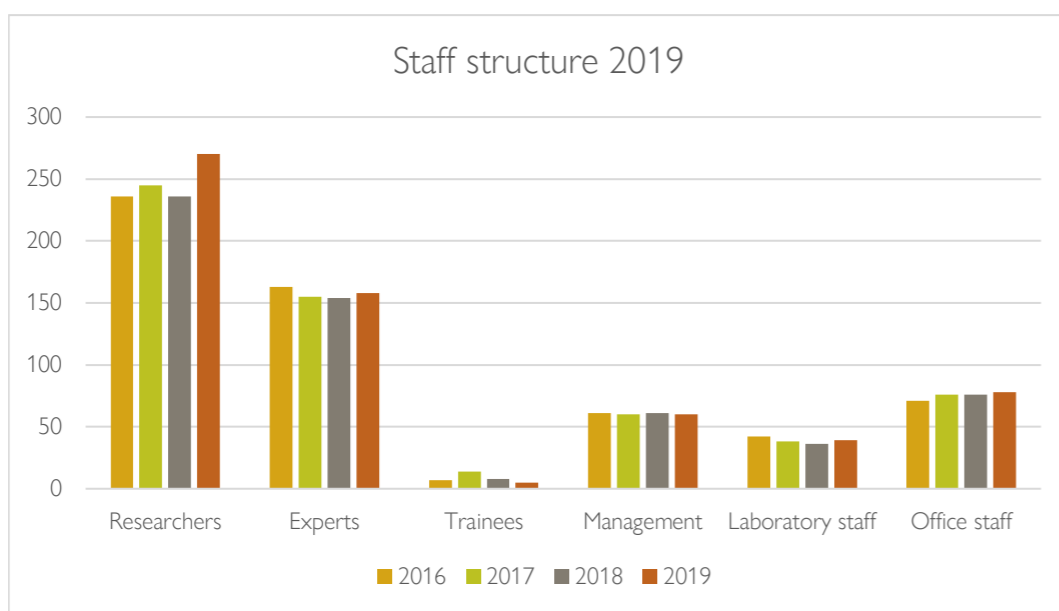
	2016	2017	2018	2019
-24	5	5	5	6
25-29	27	27	27	32
30-34	55	61	51	48
35-39	67	66	66	65
40-44	71	72	78	88
45-49	83	74	71	70
50-54	91	91	91	89
55-59	89	90	92	89
60-64	64	66	67	64
65-69	5	7	11	12
<b>TOTAL</b>	<b>556</b>	<b>559</b>	<b>558</b>	<b>564</b>



### Proportion of professional and support staff and gender-division

31.12. each year

	2016		2017		2018		2019	
	Women	Men	2016 Women	2016 Men	2017 Women	2017 Men	2018 Women	2018 Men
Researchers	119	117	236	124	121	245	121	115
Experts	74	89	163	71	84	155	75	79
Trainees	5	2	7	7	7	14	3	5
Management	29	32	61	29	31	60	28	33
Laboratory staff	28	14	42	26	12	38	24	12
Office staff	62	9	71	64	12	76	61	15
<b>TOTAL</b>	<b>317</b>	<b>263</b>	<b>580</b>	<b>321</b>	<b>267</b>	<b>588</b>	<b>312</b>	<b>259</b>



### Number of trained researchers with PhDs

31.12. each year

	2015	2016	2017	2018	2019
Women	64	62	67	66	72
Men	76	75	75	72	64
<b>TOTAL</b>	<b>140</b>	<b>137</b>	<b>142</b>	<b>138</b>	<b>136</b>

